



Basic Musculoskeletal Ultrasound (MSUS) Course

7-8 November 2024
Hong Kong

Deadline for Registration:
2 October 2024

Fee: HK\$5,200 / USD 650 per person

APLAR endorsed

**2-Day Course with
LIVE demo and practical sessions**

International Faculty

Xue-rong Deng (*China*)

Hilde Berner Hammer (*Norway*)

Ghita Harifi (*UAE*)

Zunaid Karim (*United Kingdom*)

Helen Keen (*Australia*)

Kok-ooi Kong (*Singapore*)

Anwar Samhari Mat Arshad (*Malaysia*)

Local Faculty

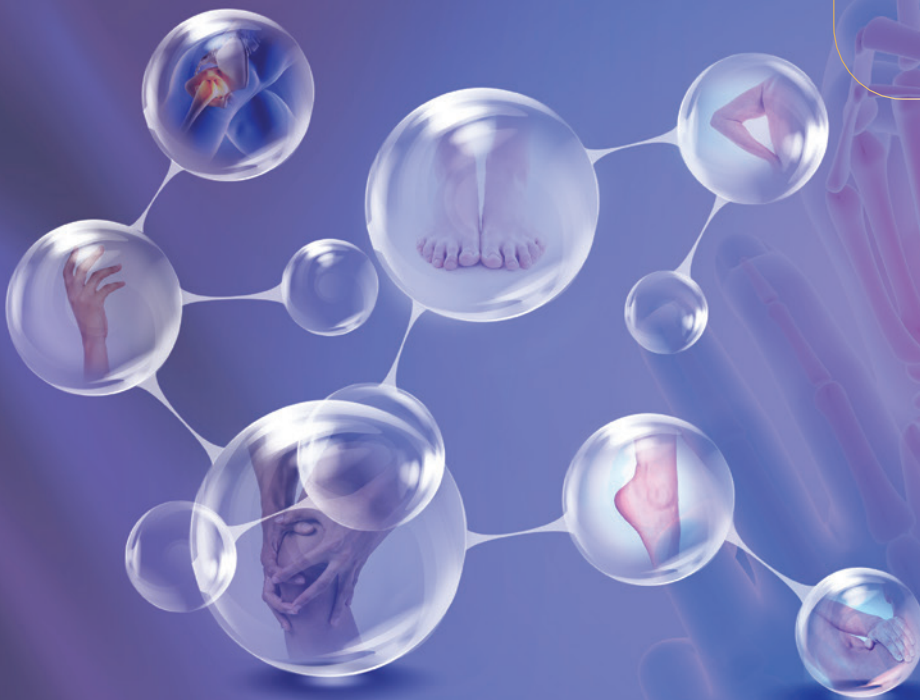
Julia Chan Carmen Ho Gavin Lee

Chi-hung To Priscilla Wong

Stella Wong Carrel Yu



www.iccr.hk



Basic Musculoskeletal Ultrasound (MSUS) Course

APLAR-endorsed Course

Preliminary Programme

Day 1: 7 November 2024

Time	Content	Speakers
08:00 – 08:15	Registration	
08:15 – 08:45	History, physics and technical characteristics of MSUS	Ghita Harifi
08:45 – 09:15	Settings and knobology of MSUS	Julia Chan
09:15 – 09:45	Sonoanatomy of normal musculoskeletal tissue: bone, cartilage, ligament, tendon, muscle, adipose tissue and skin	Carrel Yu
09:45 – 09:55	Tea Break	
09:55 – 10:55	Practical: setting up / normal MSUS, supervised handling of the probe, machine settings	All Faculty
10:55 – 11:40	Standardized scan: hand / wrist & basic pathology (with live demo)	Kok-ooi Kong
11:40 – 12:40	Practical: hand / wrist	All Faculty
12:40 – 13:25	Lunch Break	
13:25 – 13:55	Basic MSUS abnormalities definition (OMERACT) and appearance	Priscilla Wong
13:55 – 14:40	Standardized scan: elbow & basic pathology (with live demo)	Zunaid Karim
14:40 – 15:55	Practical: elbow	All Faculty
15:55 – 16:05	Tea Break	
16:05 – 16:35	Application, indications and limitations of MSUS in rheumatology including artefacts and pitfalls	Anwar Samhari Mat Arshad
16:35 – 17:20	Standardized scan: knee & basic pathology (with live demo)	Xue-rong Deng
17:20 – 18:35	Practical: knee	All Faculty

Day 2: 8 November 2024

Time	Content	Speakers
08:00 – 08:30	Clinical application of MSUS in patients with inflammatory arthritis	Gavin Lee
08:30 – 09:15	Standardized scan: ankle / foot & basic pathology (with live demo)	Helen Keen
09:15 – 10:30	Practical: ankle / foot	All Faculty
10:30 – 10:40	Tea Break	
10:40 – 11:25	Standardized scan: shoulder & basic pathology (with live demo)	Hilde Berner Hammer
11:25 – 12:40	Practical: shoulder	All Faculty
12:40 – 13:25	Lunch Break	
13:25 – 14:10	Standardized scan: hip & basic pathology (with live demo)	Peter Siu
14:10 – 15:25	Practical: hip	All Faculty
15:25 – 15:55	Quiz / Course Summary	All Faculty
15:55 – 16:00	Closing / Tea Break	

The programme is subject to change without prior notice.

Contact Us

ICCR 2024 Secretariat
c/o International Conference Consultants Ltd.
Email: iccr@icc.com.hk
Website: <https://www.iccr.hk>